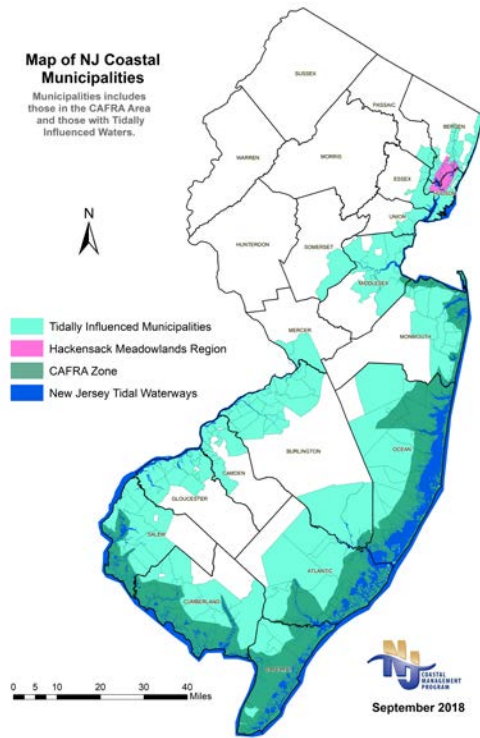




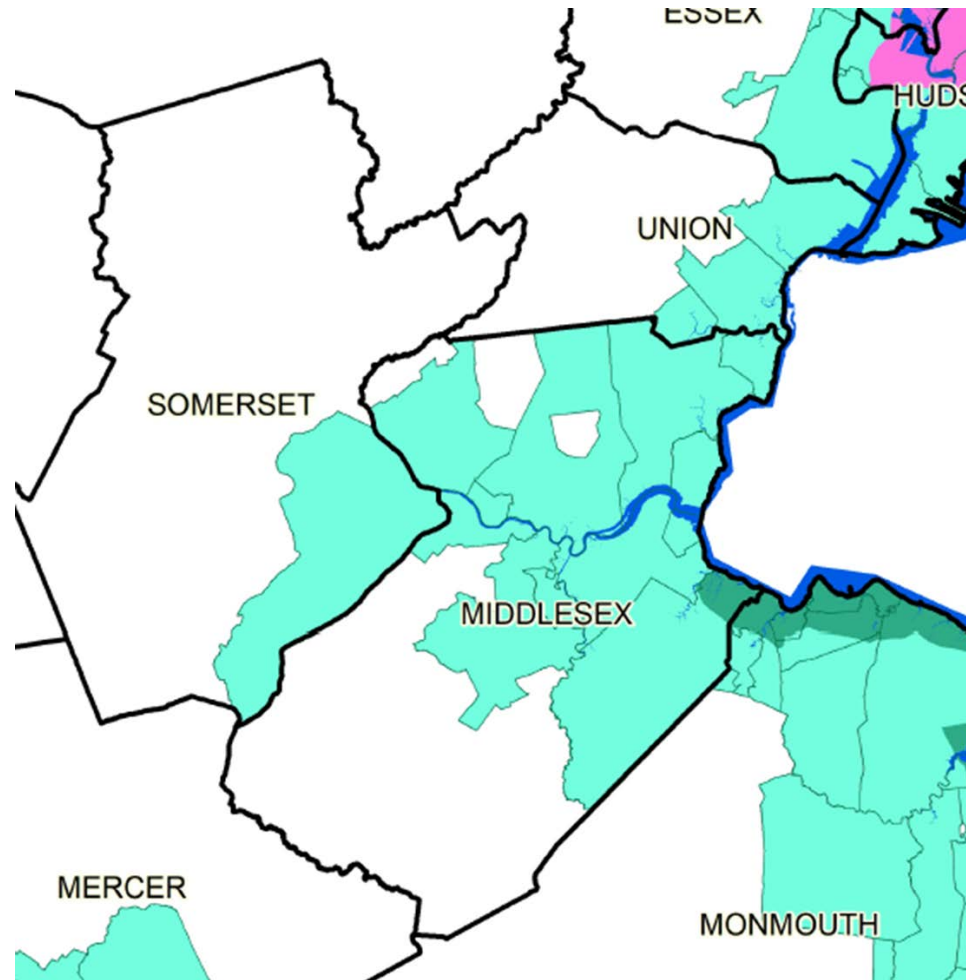
# The Resilient NJ “Thing” In Middlesex County

**Raritan River and Bay Regional Resilience Project  
Regional Team**





Map of NJ Coastal Municipalities

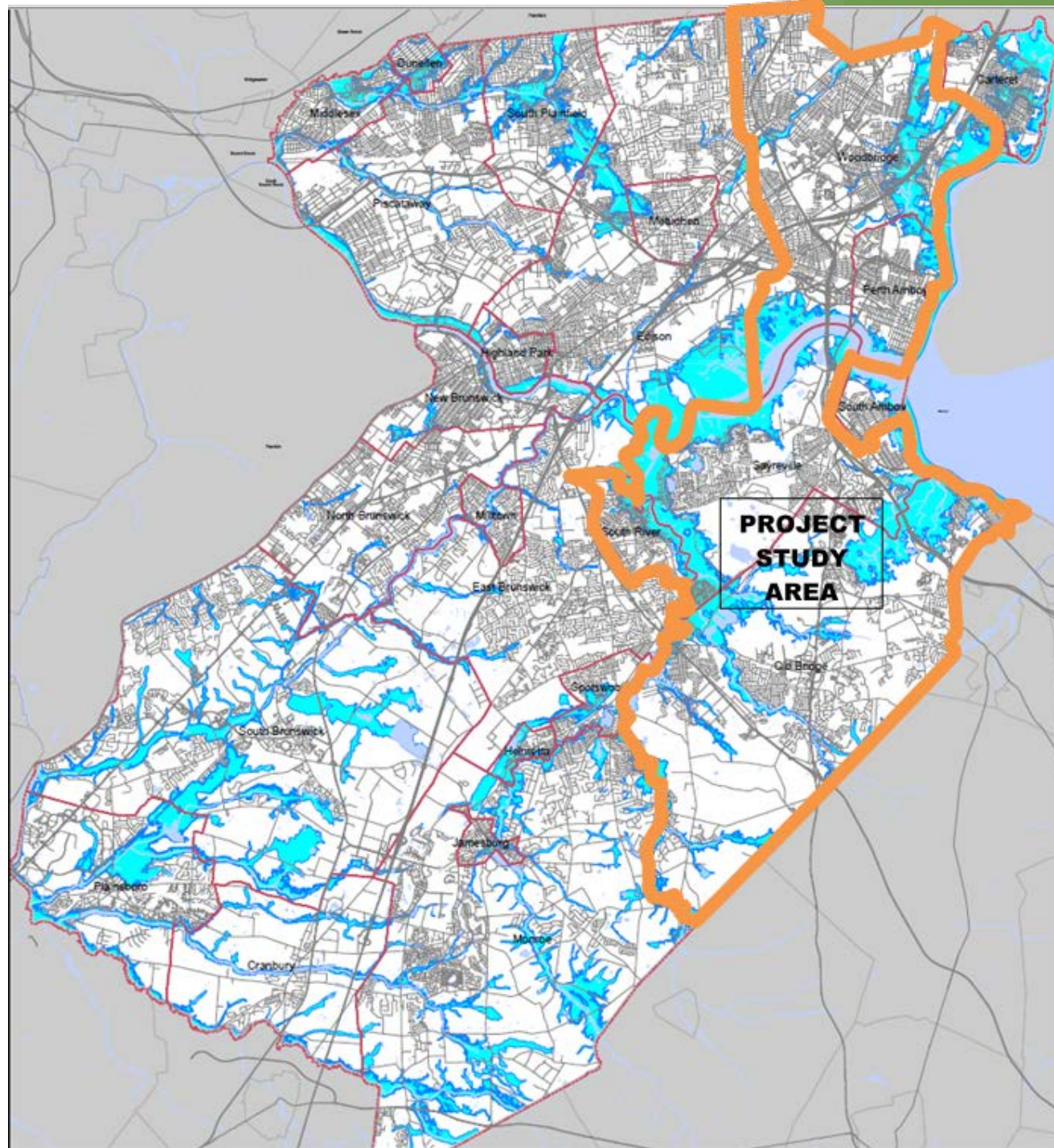


# Middlesex County



# Raritan River and Bay Regional Resiliency Project Regional Team

- ▶ Old Bridge Township
- ▶ Perth Amboy City
- ▶ Borough of Sayreville
- ▶ Borough of South River
- ▶ Woodbridge Township
- ▶ Middlesex County Office of Planning
- ▶ Lower Raritan Watershed Partnership

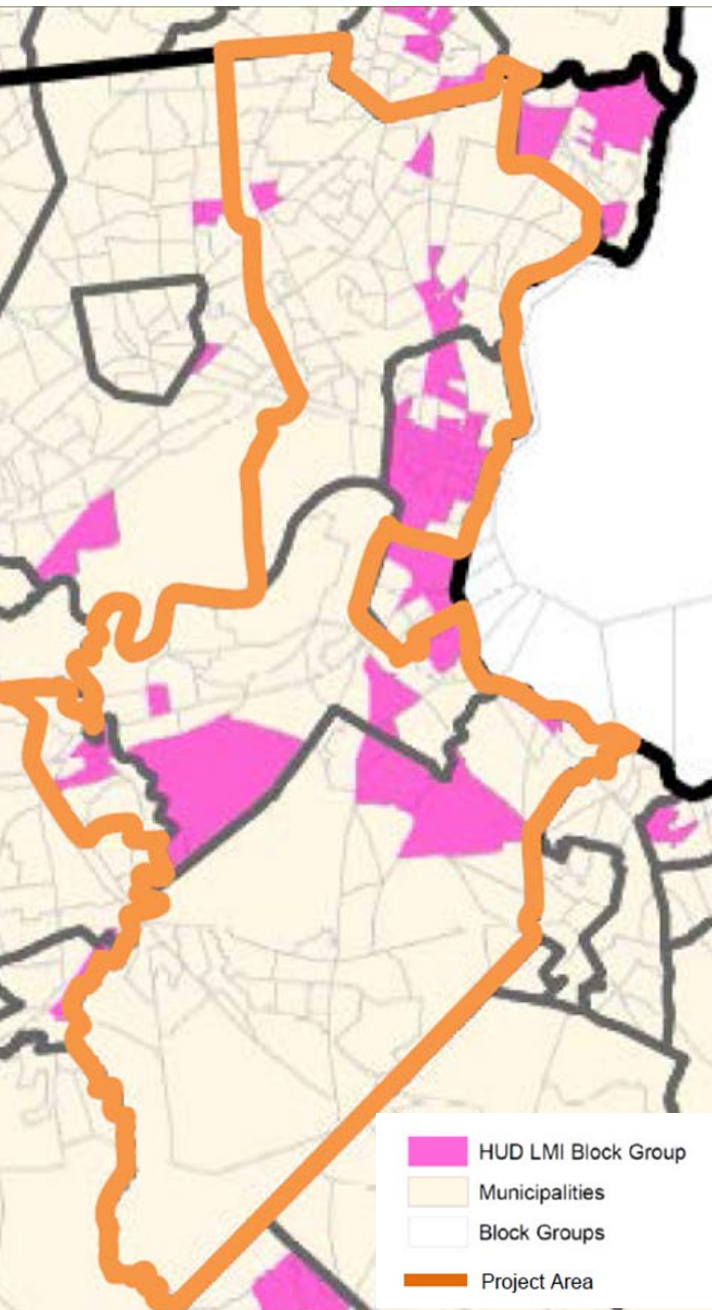




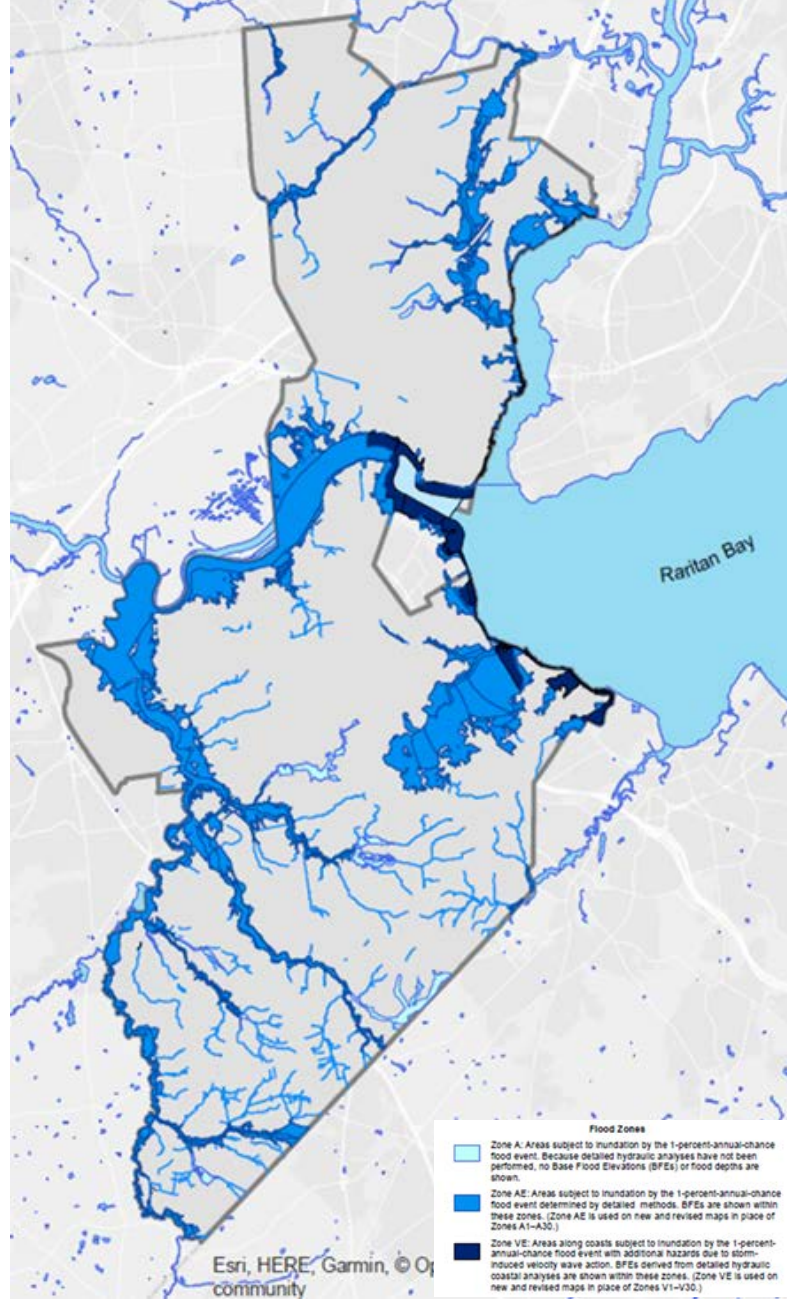
# This region was selected primarily because:

- ▶ The region has been impacted by flooding from storms of both ocean/tidal and headwater/riverine origins, providing the opportunity to address each incident type in a comprehensive manner not previously accomplished for this region.
- ▶ Socially Vulnerable Populations (SVP) and Low and Moderate Income (LMI) Block Group Populations:
  - ▶ Approx. 21% of Middlesex County SVP are in the study region.
  - ▶ Approx. 61% of the study region's population are characterized SVP.
  - ▶ The study region encompasses 26% of the Countywide HUD LMI Block Groups.
- ▶ From study process and results, a framework will be developed for comprehensive regional resiliency action planning in other sub-watershed areas of the County for countywide implementation.
- ▶ The study offers Middlesex County a unique opportunity to integrate public engagement, master planning, resiliency planning and watershed planning into the pending Middlesex County Destination 2040 Comprehensive Master Plan.

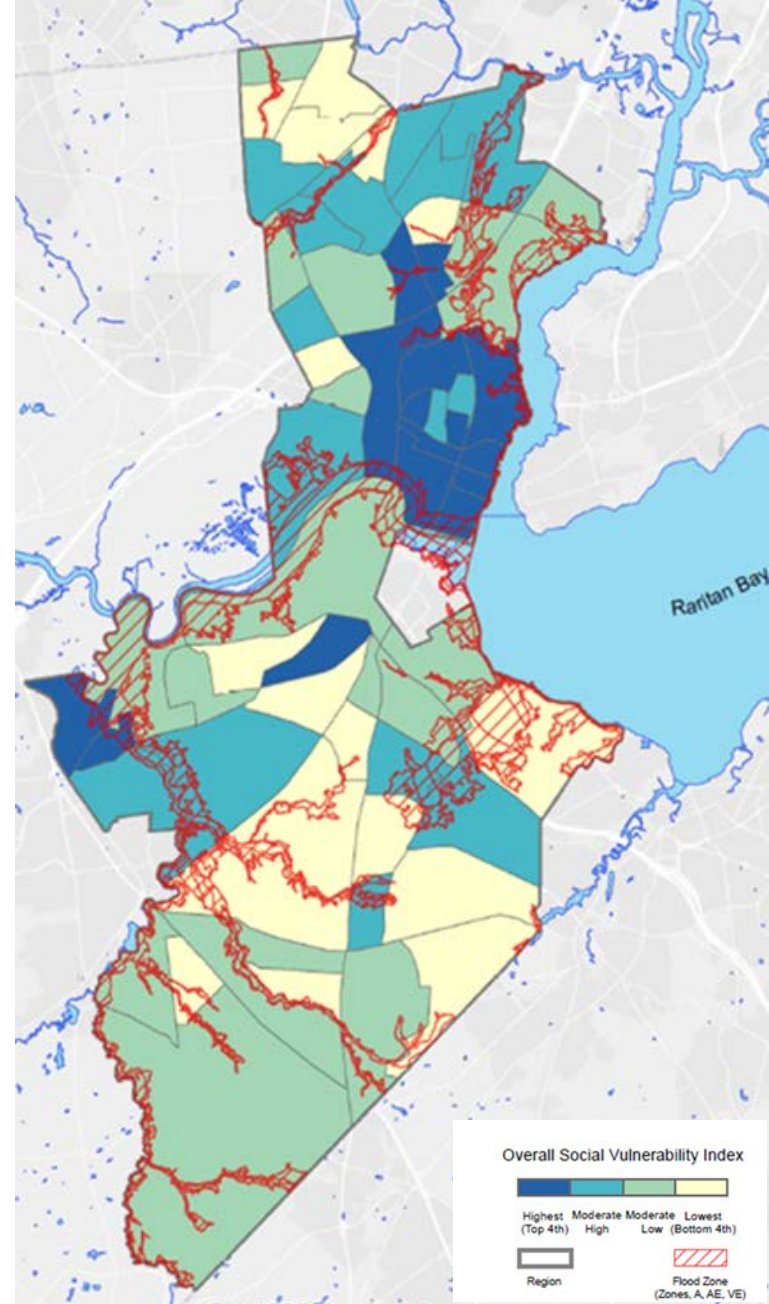




1. HUD LMI Block Group Municipalities



2. Rivers, Streams & FEMA FIRM Flood Zones



3. Social Vulnerability Index 2016



# QUESTIONS ?

Nicholas Tufaro, NJPP, NJLLA, CFM, Principal Planner  
Middlesex County Office of Planning  
Office: 732-745-3866  
Email: [nick.tufaro@co.middlesex.nj.us](mailto:nick.tufaro@co.middlesex.nj.us)

## Many Thanks for Middlesex County support:

- ▶ Middlesex County Board of Chosen Freeholders
- ▶ Middlesex County Department of Infrastructure Management
- ▶ Middlesex County Office of Emergency Management
- ▶ John Ferguson, MC Office of Emergency Management Coordinator
- ▶ Middlesex County Office of Planning (MCOP)
- ▶ Louis Greenwell, former MCOP Director of Comprehensive Planning
- ▶ Nicholas Tufaro, MCOP Principal Planner
- ▶ Ryan Rapp, MCOP GIS Director
- ▶ Jeanine Kopec Zhanghi, MCOP GIS Specialist 3
- ▶ Anthony Picone, MCOP GIS Specialist 3
- ▶ Lori Kahel, MCOP Secretarial Assistant
- ▶ Jessica Alvarez, MCOP Planner Trainee

