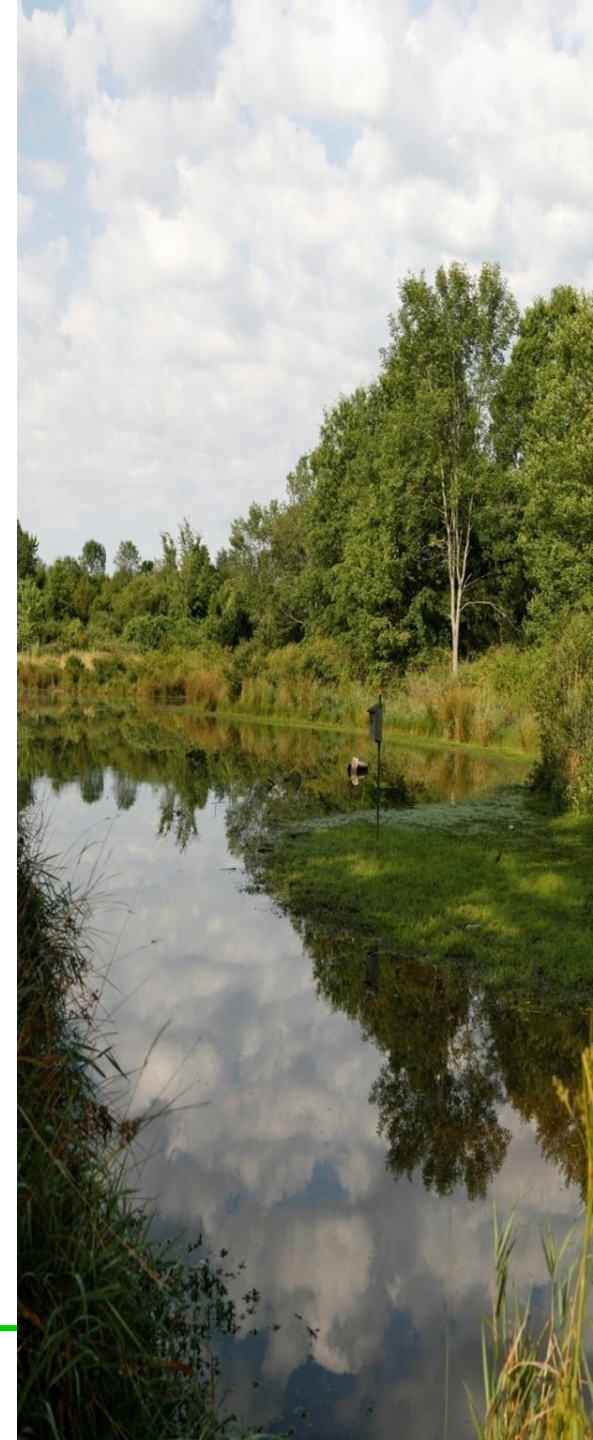


# THE WATERSHED INSTITUTE'S MODEL STORMWATER ORDINANCE

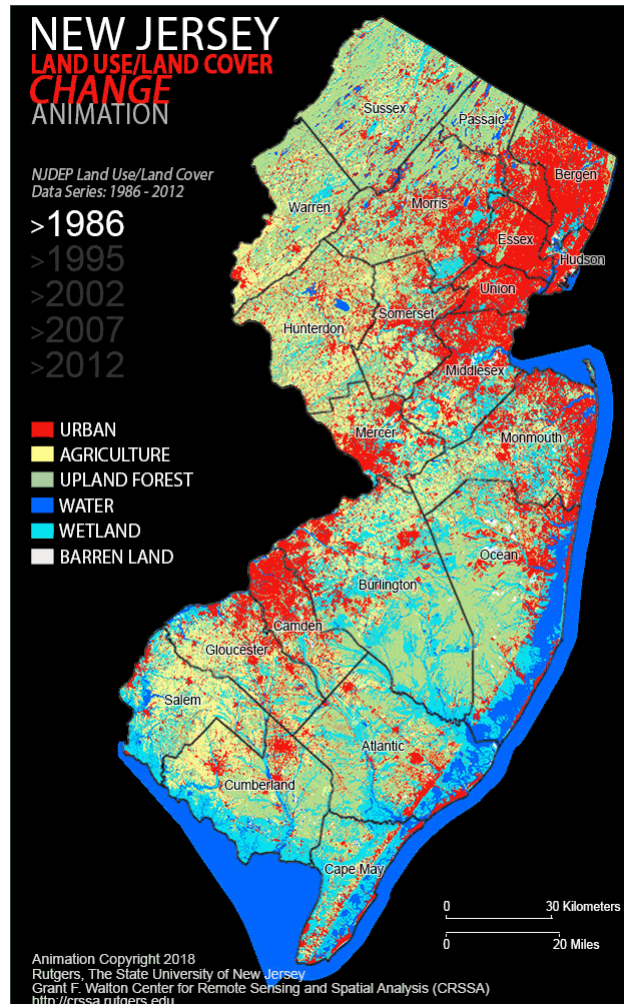


---

Your water. Your environment. Your voice.



# The Problem in Context: Expanding Development



- ❖ Public Water Supply- Only 37% of designated waters met the standards.
- ❖ Recreation- Only 16% of the designated waters met this standard.
- ❖ Aquatic Life- Only 23% of the designated waters met this standard.
- ❖ Shellfish Harvest for Consumption- Only 58% of the designated waters met the standard.

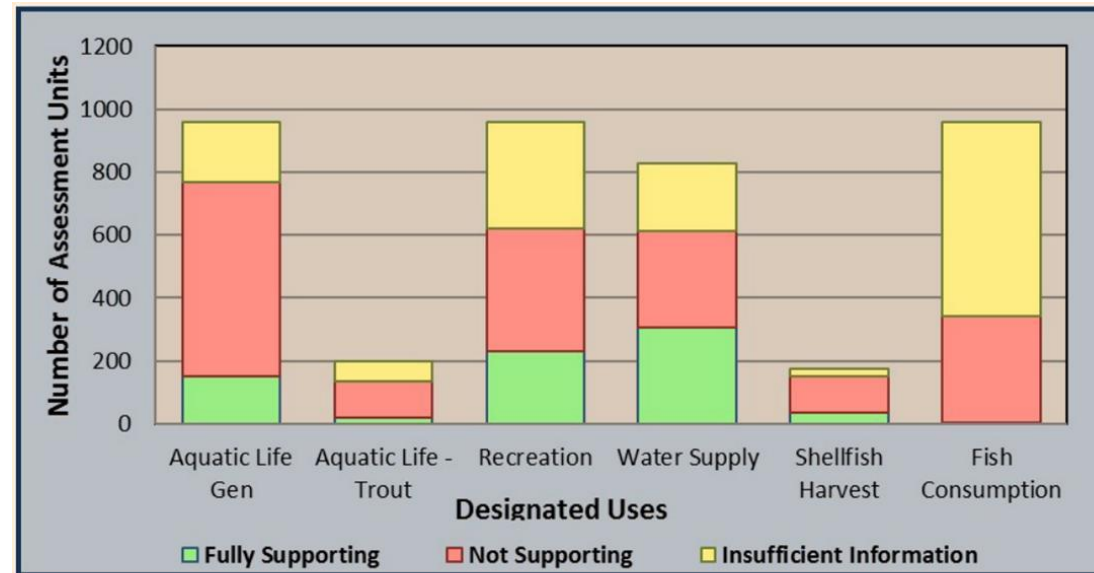


Figure 1: Statewide Designated Use Assessment Results, 2014



### Triggers for Stormwater Management

- Any major or minor development (regardless of whether or not a site plan or subdivision is required)
- Address redevelopment as well as new development

### Reduce Threshold Definition of “Major” Development

- Reduce trigger to 1/2 acre of soil disturbance (21,780 ft<sup>2</sup>) or 5,000 ft<sup>2</sup> of impervious cover

### Establish “Minor” Development Requirements

- Define as 250 ft<sup>2</sup> or more increase in impervious surface
- Capture onsite 500 gallons of stormwater per 250 ft<sup>2</sup> of impervious surface



- Require inspections of all stormwater management features
  - Quarterly reports submitted by property owners
  - Inspections by municipality auditing compliance with maintenance requirements
  - Fee paid by property owners for inspection program
- Require mitigation fee to secure waivers
- Require Green Infrastructure (GI) to control stormwater
- Incorporate TMDL and impaired waters in project review and approvals